

WHEELPAD® SuitePAD ACCESSIBLE HOME



SPECIFICATIONS

DIMENSIONS:

EXTERIOR:

- Length: 24' 6"
- Width: 8' 6"
- Height: 13' 2" on trailer (10' 9" off trailer)

INTERIOR:

- Bed: 7' 5" W x 15' 6" L x 8' 2" H
- Bath: 7' 5" W x 7' 6" L

ACCESSIBILITY:

- Exceeds ADA accessibility requirements.
- Two doors for accessible egress.
- Integral ceiling hoistway eliminates wheelchair slide-board transfers to the bathroom and bed.
- Seamless hygienic non-slip safety floor and wall finish in bathroom is easily cleaned.
- Continuous translucent grab bars in bathroom.
- Ample storage located in cubby shelving.
- More than 120 sq. ft. of flexible daylight bedroom space for medical furnishings.
- Outlets and switches installed at a comfortable, accessible height.

EFFICIENCY:

- Floor and roof are solid, water-tight SIPs (Structurally Insulated Panels).
- Insulation R values:
 - Walls: R-22.95 continuous
 - Roof: R 41.95
 - Floor: R-30.45
- Fossil-fuel free. Solar-ready design.
- Energy-efficient LED interior lighting.
- Insulated, low-E windows.
- WaterSense® labeled toilet.

SYSTEMS:

- 20-gal. Rheem® electric hot water heater.
- Water supply through quick-connect insulated Pirit® heated hose.
- Wastewater piped to the host house within an insulated chase.
- Mini-Split heat pump provides efficient heating and cooling.
- 50-amp electrical cable hooks into host house's electrical system.

RJ Adler, Accessible Housing Advisor
RJ@wheelpad.com
802-464-3957
14 Castle Hill, Wilmington, VT 05363

Your Home,
Accessible Now.
wheelpad.com



SPECIFICATIONS (CONTINUED)

DESIGN FEATURES:

- Designed by a LEED-certified architect.
- Variety of exterior finishes available.
- Corner windows and glass doors maximize natural light.
- Full wet room bathroom with one-piece hygienic toilet maximizes space. Bidet ready.
- Continuous translucent designer grab bars in bathroom.
- Two full-height cabinets for storage with cubbies and shelving.
- Vaulted ceiling includes hoist track.
- Standard tactile finishes include:
 - hand-crafted plaster wall finish
 - natural wood finished ceiling
 - protective wainscot wall panels
 - corrugated metal finishes
 - opposite double mirrors make the bathroom feel larger
 - color changing LED accent cove lighting

TRAILER INFORMATION:

- Reinforced SIP base can be rolled or craned into place on piers or foundation.
- Towable behind one-ton truck.
- Auxiliary tongue - tow from either end for placement.
- 2-5/16" Tow Ball
- ST225 / 75 / R15 Tire size.
- 9,990 lb GVW (gross vehicle weight).
- 9,000 lb dry weight.
- Leveling jack hold weight: 5,000 lb.
- Axle and brakes are 50 state compliant.

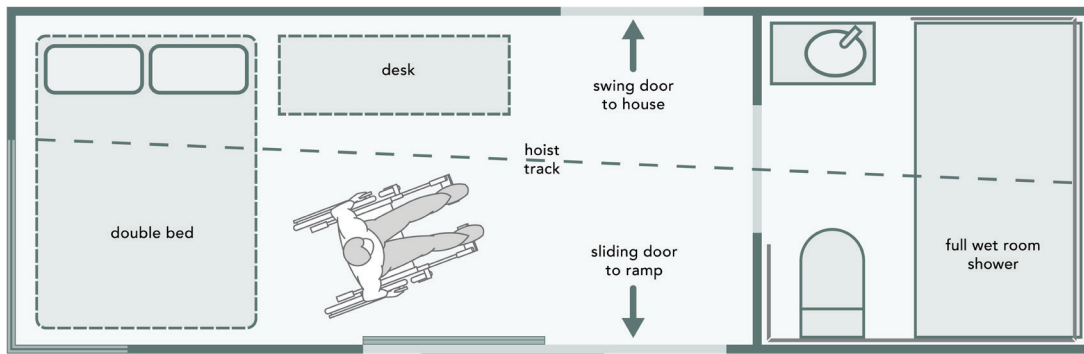
COST:

PURCHASE:

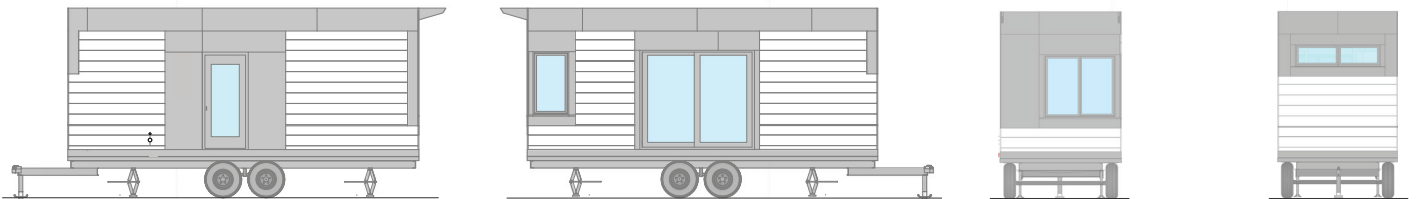
- \$107,200

LEASE:

- \$3,250 / month
- 6-month minimum lease



For more information,
please visit
wheelpad.com
or call 802-464-3957



RJ Adler, Accessible Housing Advisor
RJ@wheelpad.com
802-464-3957
14 Castle Hill, Wilmington, VT 05363

Your Home,
Accessible Now.
wheelpad.com

