

WHEELPAD® SuitePAD ACCESSIBLE HOME



SPECIFICATIONS

ACCESSIBILITY:

- ADA accessible floor plan.
- Two aligned exit doors for accessible egress.
- Full size wet room bathroom easily accommodates an attendant.
- ADA chair-height toilet.
- Built-in ceiling hoistway track is lift ready to eliminate wheelchair slide-board transfers to the bathroom and bed.
- Seamless hygienic non-slip safety floor and wall finish in the bathroom.
- Continuous translucent grab bars in bathroom.
- Convenient storage in cubby shelving.
- More than 178 sq. ft. of interior bed and bath space for medical furnishings.
- Outlets and switches installed at a comfortable, accessible height.

COST:

PURCHASE:

- \$133,000

LEASE:

- \$3,250 / month
- 12-month minimum lease

DESIGN FEATURES:

- Designed by a LEED-certified architect.
- Corner windows and glass doors maximize natural light.
- Bidet seat ready toilet for hygienic and eco-friendly warm water washing.
- Vaulted ceiling.
- Standard tactile finishes include:
 - hand-crafted plaster wall finish
 - natural wood finished ceiling
 - protective birch wainscot wall panels
 - corrugated galvanized metal finishes
 - color changing LED accent cove lighting

DIMENSIONS:

EXTERIOR:

- Length: 24' 6"
- Width: 8' 6"
- Height: 13' 2" on trailer (10' 9" off trailer)

INTERIOR:

- Bed: 7' 5" W x 15' 6" L x 8' 3" H
- Bath: 7' 5" W x 7' 6" L x 8' 3" H

RJ Adler, Accessible Housing Advisor
RJ@wheelpad.com
802-464-3957
14 Castle Hill, Wilmington, VT 05363

wheelpad.com



SPECIFICATIONS (CONTINUED)

EFFICIENCY:

- Floor and roof are solid, one-piece water-tight SIPs (Structural Insulated Panels).
- Insulation R values:
 - Walls: R-22.95 continuous
 - Roof: R 41.95
 - Floor: R-26.85
- Energy-efficient LED interior lighting.
- Insulated, low-E windows.
- Water-efficient toilet.

INSTALLATION:

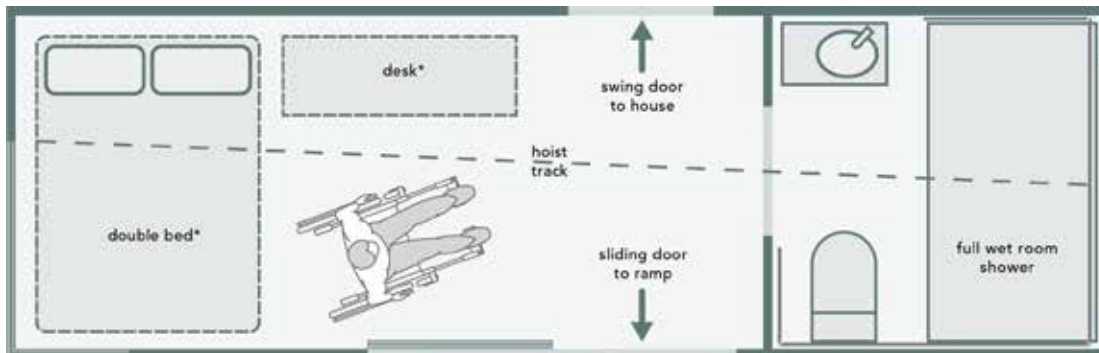
- Reinforced all SIP construction can be rolled or craned into place on piers or foundation.
- Can remain on trailer.
- Wind loading: 90MPH Wind, Exposure B
- Snow loading: 75 lbs/square-foot ground snow load.

MECHANICAL SYSTEMS:

- 20-gallon electric hot water heater.
- Mini-Split heat pump provides efficient heating and cooling.
- Quick-connect water supply.
- Wastewater piped to the host house within an insulated chase.
- 50-amp electrical cable hooks into host house's electrical service.

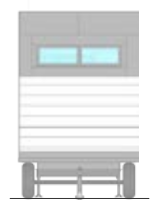
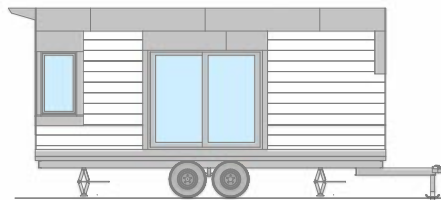
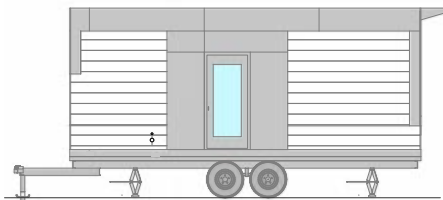
TRAILER INFORMATION:

- Towable with a one-ton truck.
- Auxiliary tongue available - tow from either end for placement.
- 2-5/16" Tow Ball
- ST225 / 75 / R15 Tire size.
- 9,990 lb gross vehicle weight.
- 9,000 lb dry weight.
- Leveling jack hold weight: 5,000 lb.
- Axle and brakes are 50 state compliant.



*Client Supplied

For more information,
please visit
wheelpad.com
or call 802-464-3957



RJ Adler, Accessible Housing Advisor
RJ@wheelpad.com
802-464-3957
14 Castle Hill, Wilmington, VT 05363

wheelpad.com

